



TV-IP322WI (V1.0R)

SETUP INFO

UPC #	710931110524
Master Carton UPC #	10710931110521
Video	https://youtu.be/GNz2YWwFu7Q
Product Page	http://www.trendnet.com/langen/products/proddetail.asp?prod=175_TV-IP322WI
Additional Images	http://www.trendnet.com/langen/support/supportdetail.asp?prod=175_TV-IP322WI
Alternate Product Name	Outdoor 1.3 MP HD WiFi IR Network Camera, IP66, bullet, 30m night vision IR, 100 ft., PoE, 960p, 802.11n, WiFi N
Key Search Words	Wifi network camera, wireless network camera, ip camera, security cameras, cctv camera, wireless camera, wifi camera, security camera system, wireless ip camera, network camera, ip network camera, wireless security cameras, home security cameras, surveillance camera, mini camera, Night vision, IR, Infrared, 1.3 megapixel, megapixel , 1.3 MP, HD, PoE, email alerts, motion detection, scheduled recordings, H.264, MPEG-4MJPEG, 30 meters, 30 m, 100 ft., securview, Samba, DWDR, D-WDR, 3D DNR, IPv6, Digital Zoom, IP66, Power over Ethernet, bullet, fixed position, WiFi N, Wireless N, 802.11n
Unit Dimensions	27.0 x 13.5 x 13.5 cm (11 x 6 x 6 in.)
Unit Weight	1.14 kg (2.57 lbs.)
Unit Qty per Case	24
Case Dimension	54 x 40 x 54 cm (22 x 16 x 22 in.)
Case Weight	24.80 kg (56 lbs.)
Harmonized Tarriff Code	8525804000
ECCN	EAR99
Country of Origin	China
Product Availability Date	October 2015
Warranty	3 year limited



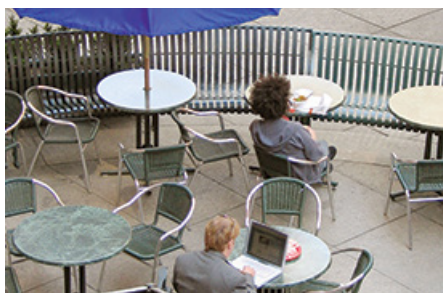


Outdoor 1.3 MP HD WiFi IR Network Camera

TV-IP322WI (v1.0R)

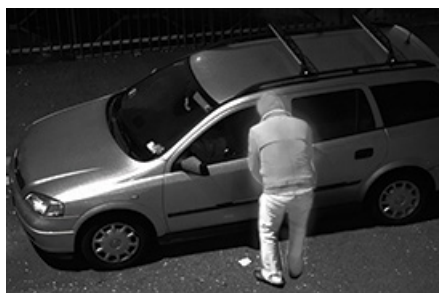
- 1.3 Megapixel HD resolution (960p)
- Connect to a WiFi N or PoE network
- Compact IP66 weather rated housing
- Night vision up to 30 meters (100 ft.)
- Program motion detection recording and email alerts
- MicroSD card slot (up to 64 GB)
- Digital Wide Dynamic Range image balancing
- ONVIF and IPv6 support

TRENDnet's Outdoor 1.3 MP HD WiFi IR Network Camera, model TV-IP322WI, provides powerful 1.3 megapixel night vision in complete darkness for up to 30 meters (100 ft.). This ultra-compact camera is outdoor ready with an IP66 weather rated housing, embedded WiFi N, and a MicroSD card slot. It comes with a free iOS® and Android™ mobile app and complimentary pro-grade software to manage up to 32 TRENDnet cameras.



WiFi or PoE

The ability to connect the camera to an existing WiFi (2.4 GHz) or PoE network offers installation flexibility.



Day/Night HD Surveillance

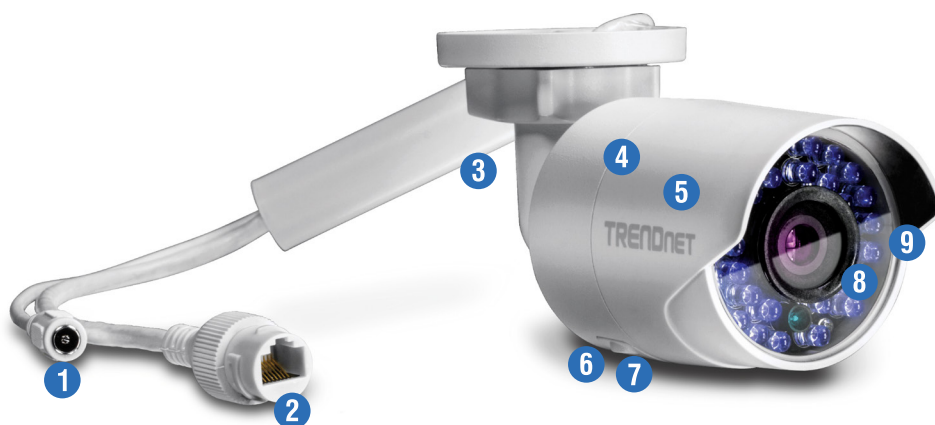
960p video (1.3 Megapixel) at 30 fps in H.264 compression and 30 meter rated night vision provide 24 hour surveillance.



Outdoor Ready

Built for extreme environments with an IP66 weather rating and an operating temperature range of -30 – 60 °C (-22 – 140 °F).

Networking Solution



- 1 Power port
- 2 Optional PoE port
- 3 Adjustable mounting hardware
- 4 Built-in 2.4 GHz WiFi
- 5 IP66 housing
- 6 MicroSD card slot (up to 64 GB)
- 7 WPS with reset button
- 8 IR LEDs
- 9 Sun visor



1.3 Megapixel

Record up to 1280 x 960 pixel video (960p) at 30 fps in H.264 compression



Night Vision

Night vision up to 30 meters (100 ft.) in complete darkness



Adjustable Bracket

Adjustable integrated mounting bracket provides installation flexibility



WiFi N

Network the camera to an existing Wireless N (2.4 GHz) network



PoE

Supports a Power over Ethernet (IEEE 802.3af) network connection for an optional PoE installation



Outdoor Ready

Outdoor IP66 weather rated and an operating temperature range of -30 – 60 °C (-22 – 140 °F)



Storage

Store video to a MicroSD (SDHC, SDXC) card up to 64 GB (sold separately) or set up SMB or FTP Server storage



Smart IR

Dynamic IR adjustment optimizes night visibility



D-WDR

Digital Wide Dynamic Range improves video quality in high contrast lighting environments



Advanced Playback

Advanced in-camera archived video review functionality



Motion Detection

Create motion detection windows with separate sensitivity settings and event triggers



Recording Schedule

Define a weekly recording schedule with a mixture of continuous and motion detection recording



IPv6

IPv6 support



ONVIF

ONVIF Profile S compliant



Free Apps

See live video on a mobile device with free iOS® and Android™ apps



Complimentary Software

Complimentary pro-grade software to manage up to 32 TRENDnet cameras

Specifications

Lens

- Focal length: 4 mm
- Focal depth: 20 cm+
- Aperture: F2.0
- Board lens
- Sensor: 1/3" progressive scan CMOS

Viewing Angle

- Horizontal: 71.6°
- Vertical: 52°
- Diagonal: 92°

Zoom

- User-defined digital zoom

Minimum Illumination

- IR off: 0.028 lux
- IR on: 0 lux
- IR Wavelength: 850nm
- 30 meter IR illumination distance
- Smart IR reduces close object overexposure

Video

- D-WDR: 0-100 scale
- 3D Digital Noise Reduction (DNR)
- Shutter speed: 1/3 - 1/100,000
- H.264: 1280 x 960 up to 30 fps
- MJPEG: 704 x 480 up to 30 fps

Hardware Standards

- IEEE 802.1X
- IEEE 802.3
- IEEE 802.3u
- IEEE 802.3x
- IEEE 802.3af
- IEEE 802.11b
- IEEE 802.11g
- IEEE 802.11n

Device Interface

- 10/100 Mbps PoE port
- Power port (for wireless installations)
- Integrated adjustable mounting base
- MicroSD card slot (up to 64 GB)
- WPS button
- Reset button
- LED indicator

Frequency

- 2.412 – 2.483 GHz

Modulation

- 802.11b: CCK, QPSK, BPSK
- 802.11g/n: OFDM

Antenna Gain

- Built-in 3dBi

Security:

- 64/128-bit, WPA/WPA2-PSK

Data Rate

- 802.11b: up to 11 Mbps

- 802.11g: up to 54 Mbps
- 802.11n: up to 150 Mbps

Output Power

- 802.11b: 17 ± 1.5 dBm (typical)
- 802.11g: 14 ± 1.5 dBm (typical)
- 802.11n: 12.5 ± 1.5 dBm (typical)

Receiving Sensitivity

- 802.11b: -90 dBm at 11 Mbps
- 802.11g: -75 dBm at 54 Mbps
- 802.11n: -74 dBm at 150 Mbps

Channel

- 1-11 (FCC), 1-13 (ETSI)

Wireless Range

- 50 Meter (depends on the environment)

Housing

- Weather rating: IP66

Network Protocol

- IPv4, IPv6, UDP, TCP, ICMP, ONVIF v2.2, DHCP, NTP, DNS, DDNS, SMTP, FTP, SNMP (v1, v2c, v3), QoS, IGMP, Bonjour
- NFS, SMB/CIFS
- HTTP, HTTPS
- PPPoE
- UPnP, RTSP, RTP, RTCP, SSL

Operating Temperature

- -30 – 60 °C (-22 – 140 °F)

Operating Humidity

- Max. 95% non-condensing

Certifications

- CE
- FCC
- UL 60950

Dimensions

- 150 x 60 x 75 mm (5.9 x 2.4 x 3.0 in.)

Weight

- 334 g (11.9 oz.)

Power

- Input: 100 – 240 V 50/60 Hz 0.3 A
- Output: 12 V 1 A
- Consumption: 7 Watts max.
- PoE: 802.3af

Management Interface

- Multi-language support: English, French, German, Russian, and Spanish
- IP address filter
- QoS traffic prioritization
- Time, date, and text overlay
- Image settings: brightness, contrast, saturation, sharpness, smart IR, exposure time (1/3 – 1/100,000), video standard, day/night switch, sensitivity, switch time, mirror, D-WDR, white balance, digital noise reduction

- D-WDR enhances video quality in high contrast daytime lighting
- 3D Digital Noise Reduction enhances night vision quality
- Scheduled recording: continuous and motion detection
- Video storage: to computer, NAS, CIFS/SAMBA share or through software
- Motion detection fields: define custom motion detection areas, motion sensitivity, and dynamic motion analysis
- Privacy masks: define custom privacy mask areas
- Tamper detection: email notification if the viewing field darkens suddenly
- Video playback: advanced playback functionality with visual timeline displaying detected motion and scheduled recordings
- Alert messages: storage full, storage error, and illegal login
- Snapshot: real time snapshot, motion detection with schedule, video tamper detection with schedule
- Supported dynamic DNS services: Dyn.com and NO-IP.com
- Management Setting: maximum 32 user accounts
- Supports remote management
- Storage logs: Alarm, Exception, Operation, and others
- Compatibility: Internet Explorer® 9.0 or higher, Firefox® 13.0 or higher, Safari® 4.0 or higher, Chrome™ 24.0 or higher

TRENDnetView Pro Software

- Supports up to 32 TRENDnet cameras
- Multiple language support
- Set recording options (motion detection, schedule, event trigger)
- Search and playback
- Custom viewing modes and options
- Compatibility: Windows® 10, 8.1, 8, 7, Vista, XP, Windows Server® 2003, 2008

TRENDnet IPView App

- Free iOS and Android™ app
- View your camera on your mobile device
- Take snapshots
- Zoom

Warranty

- 3 year limited

Package Contents

- TV-IP322WI
- CD-ROM (Utility, Software & User's Guide)
- Quick Installation Guide
- Camera mounting hardware
- Power adapter (12V 1A)
- Network Cable (2 m / 6.5 ft.)

