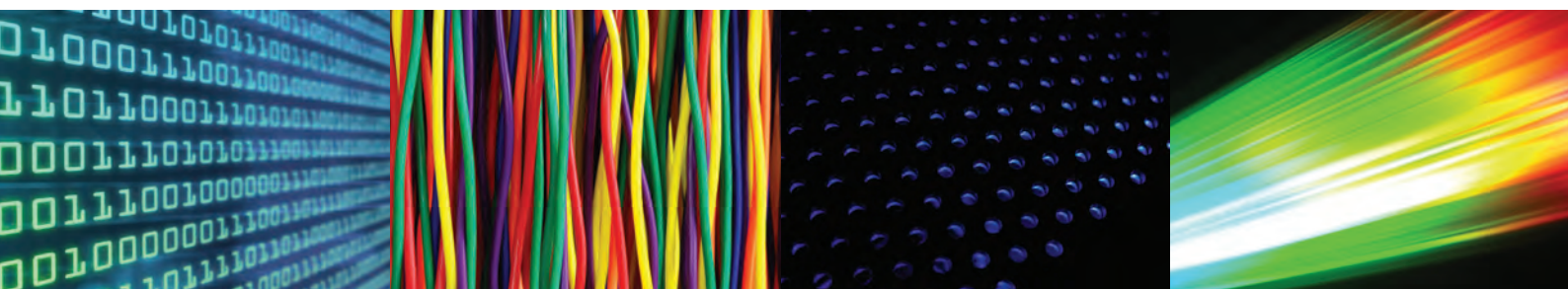


CONSULTANTS & SPECIFIERS

This brochure is intended as a general guide only. Refer to the Dahua product data sheet for full product specifications, details and part numbering of each specific variant.

Data sheets available at: <http://www.dahuasecurity.com/>



DAHUA VIDEO SYSTEMS

DAHUA: Analog Cameras


DHU17060 (CA-DBW181R-VF)
Vandal Proof IR Dome Camera


- 1/3" HDIS CMOS Sensor
- 720TVL
- 2.7~12mm varifocal lens
- ICR
- IR LEDs: 30m, Smart IR
- IP66, IK10
- Material: Metal
- 12V DC

DHU17060 CA-DBW181R-VF

VANDAL PROOF IR DOME CAMERA, 720TVL, 2.7~12MM VARIFOCAL LENS, 1/3" HDIS CMOS SENSOR, ICR


DHU17065 (CA-DW181R-VF)
IR Dome Camera


- 1/3" HDIS CMOS sensor
- 720TVL
- 2.7~12mm varifocal lens
- ICR
- IR LEDs: 30m, Smart IR
- IP66
- Material: Metal
- 12V DC

DHU17065 CA-DW181R-VF

IR DOME CAMERA, 720TVL, 2.7~12MM VARIFOCAL LENS, 1/3" HDIS CMOS SENSOR, ICR


DHU17055 (CA-FW181R-VF)
IR Bullet Camera


- 1/3" HDIS CMOS Sensor
- 720TVL
- 2.7~12mm varifocal lens
- ICR
- IR LEDs: 30m, Smart IR
- IP66
- Material: Metal
- 12V DC

DHU17055 CA-FW181R-VF

IR BULLET CAMERA, 720TVL, 2.7~12MM VARIFOCAL LENS, 1/3" HDIS CMOS SENSOR, ICR

Note: Cameras with IP66 or IP67 ratings can be used externally.

DAHUA: Analog DVR


DHU16020 (DVR0404HF-A-E)
4 Channel EFFIO 960H DVR

- 4ch 960H video inputs
- All channel @ 960H realtime recording
- 1 HDMI, VGA output up to 1080p, 1 TV, 1 Spot
- 4ch audio in & 1ch audio out, 1/1ch Mic in/out
- 4ch alarm in & 3ch relay out, RS485, RS232
- 4ch sync realtime playback
- 2 SATA, 2 USB, 1 RJ45(1000M)


DHU16020 DVR0404HF-A-E

4 CHAN EFFIO 960H DVR 2HDD BAYS, 960H/D1/HD1/2CIF/CIF @25FPS


DHU15950 (DVR5108HE)
8 Channel 960H DVR

- 8ch video inputs
- All channel @ 960H realtime recording
- 1 HDMI, VGA output up to 1080p, 1 TV
- 4ch audio in & 1ch audio out
- 8ch alarm in & 3/3/1ch relay out, RS485
- 8ch sync realtime playback
- 1 SATA, 2 USB, 1 RJ45(100M)


DHU15950 DVR5108HE

8 CHAN 960H DVR, 1 HDD BAY, 960H/D1/HD1/2CIF/CIF @25FPS


DHU16025 (DVR0804HF-A-E)
8 Channel EFFIO 960H DVR

- 8ch 960H video inputs
- All channel @ 960H realtime recording
- 1 HDMI, VGA output up to 1080p, 1 TV, 1 Spot
- 8ch audio in & 1ch audio out, 1/1ch Mic in/out
- 8ch alarm in & 3ch relay out, RS485, RS232
- 8ch sync realtime playback
- 2 SATA, 2 USB, 1 RJ45(1000M)


DHU16025 DVR0804HF-A-E

8 CHAN EFFIO 960H DVR 2HDD BAYS 960H/D1/HD1/2CIF/CIF @25FPS


DHU15955 (DVR5116HE)
16 Channel 960H DVR

- 16ch video inputs
- All channel @ 960H realtime recording
- 1 HDMI, VGA output up to 1080p, 1 TV
- 4ch audio in & 1ch audio out
- 16ch alarm in & 3/3/1ch relay out, RS485
- 16ch sync realtime playback
- 1 SATA, 2 USB, 1 RJ45(100M)


DHU15955 DVR5116HE

16 CHAN 960H DVR, 1HDD BAY, 960H/D1/HD1/2CIF/CIF @25FPS


DHU16030 (DVR1604HF-A-E)
16 Channel EFFIO 960H DVR

- 16ch 960H video inputs
- All channel @ 960H realtime recording
- 1 HDMI, VGA output up to 1080p, 1 TV, 1 Spot
- 16ch audio in & 1ch audio out, 1/1ch Mic in/out
- 16ch alarm in & 3ch relay out, RS485, RS232
- 16ch sync realtime playback
- 2 SATA, 2 USB, 1 RJ45(1000M)


DHU16030 DVR1604HF-A-E

16 CHAN EFFIO 960H DVR, 8HDD BAYS, 960H/D1/HD1/2CIF/CIF @25FPS

Note: Cameras with IP66 or IP67 ratings can be used externally.

DAHUA: HDCVI Cameras


DHU13020 (HAC-HDBW2220E)
IR Vandal Dome HDCVI Camera

- 1/2.8" 2.4MP CMOS
- 25/30fps @ 1080p, 25/30/50/60fps @ 720p
- HD/SD switch, OSD
- 3.6mm fixed lens (6mm, 8mm optional)
- ICR, 3D-DNR
- Max. IR LEDs length 20m, Smart IR
- IP66, IK10
- Material: Metal
- 12V DC


DHU13040 (HAC-HDBW2220R-Z)
IR Vandal Dome HDCVI Camera

- 1/2.8" 2.4MP CMOS
- 25/30fps @ 1080Pp 25/30/50/60fps @ 720p
- HD/SD switch, OSD
- 2.7~12mm motorized lens
- ICR, 3D-DNR
- Max. IR LEDs length 30m, Smart IR
- IP66, IK10
- Material: Metal
- 12V DC


DHU13020 HAC-HDBW2220E

IR VANDAL DOME HDCVI CAMERA, 3.6MM LENS, 2MP CMOS, ICR

DHU13040 HAC-HDBW2220R-Z

IR VANDAL DOME HDCVI CAMERA, 2.7~12MM MOTORISED LENS, 2MP, ICR, 25/30FPS@1080P, 25/30/50/60FPS@720P


DHU11010 (SD63230I-HC)
PTZ HDCVI Dome Camera

- 1/2.8" Exmor CMOS
- Max 25/30fps @ 1080p, 50/60fps @ 720p
- 4.3~129mm 30x optical zoom
- Max 300 °/s pan speed
- 2D/3D DNR, DWDR
- 2/1ch alarm in/out
- IP 66, IK10, -40~60°C


DHU13025 (HAC-HFW2220R-VF)
IR Bullet HDCVI Camera

- 1/2.8" 2.4MP CMOS
- 25/30fps @ 1080p, 25/30/50/60fps @ 720p
- HD/SD switch, OSD
- 2.7~12mm varifocal lens
- ICR, 3D-DNR
- Max. IR LEDs length 30m, Smart IR
- IP66
- Material: Metal
- 12V DC


DHU11010 SD63230I-HC

PTZ HDCVI DOME CAMERA , 4.3~129MM LENS (30X ZOOM), 2MP CMOS, 30FPS@1080P, 60FPS @720P, ICR

DHU13025 HAC-HFW2220R-VF

IR-BULLET HDCVI CAMERA, 2.7~12MM VF LENS, 2MP ,2MP CMOS, ICR, 25/30FPS@1080P, 25/30/50/60FPS@720P


DHU13030 (HAC-HFW2220R-Z)
IR Bullet HDCVI Camera

- 1/2.8" 2.4MP CMOS
- 25/30fps @ 1080p, 25/30/50/60fps @ 720p
- HD/SD switch, OSD
- 2.7~12mm motorized lens
- ICR, 3D-DNR
- Max. IR LEDs length 30m, Smart IR
- IP66
- Material: Metal
- 12V DC


DHU13030 HAC-HFW2220R-Z

IR-BULLET HDCVI CAMERA, 2.7~12MM MOTORISED LENS, 2MP, 2MP CMOS, ICR, 25/30FPS@1080P, 25/30/50/60FPS@720P

Note: Cameras with IP66 or IP67 ratings can be used externally.

DAHUA: HDCVI DVR


DHU14024 (HCVR7204A-S2)
4 Channel TRIBRID DVR

- IP/HDCVI/Analog
- 1080p @ 25/30fps per channel
- 1080p realtime view
- 2 HDD bays
- 2 IP ports


DHU14024 HCVR7204A-S2

4 CHAN TRIBRID DVR, 1080P REALTIME VIEW 2 HDD BAYS, 2 IP PORTS, 1080P @25/30 FPS PER CHANNEL


DHU14215 (HCVR5104H-S2)
4 Channel TRIBRID Mini Case DVR

- IP/HDCVI/Analog
- 1080p 12/15fps per channel
- 720p realtime view
- 1 HDD bay
- 2 IP ports


DHU14215 HCVR5104H-S2

4 CHAN TRIBRID MINI CASE DVR, 720P REALTIME VIEW, 1 HDD BAY, 2 IP INPUTS, 1080P 12/15FPS PER CHANNEL


DHU14220 (HCVR5108H-S2)
8 Channel TRIBRID Mini Case DVR

- IP/HDCVI/Analog
- 1080p 12/15fps per channel
- 720p realtime view
- 1 HDD bay
- 2 IP ports


DHU14220 HCVR5108H-S2

8 CHAN TRIBRID MINI CASE DVR, 720P REALTIME VIEW, 1 HDD BAY, 2 IP PORTS, 1080P 12/15FPS PER CHANNEL


DHU14026 (HCVR7208A-S2)
8 Channel TRIBRID DVR

- IP/HDCVI/Analog
- All channel 1080P realtime recording
- 8 channel synchronous realtime playback, GRID interface & smart search
- HDMI/VGA simultaneous video output
- Support 2 SATA HDDs up to 8TB, 2 USB2.0
- ONVIF Version 2.4 conformance
- 3D intelligent positioning with Dahua PTZ dome camera
- Multiple network monitoring: Web viewer, CMS(DSS/Smart PSS)& Smart Phone(DMSS)


DHU14026 HCVR7208A-S2

8-CH TRIBRID DVR, 1080P REALTIME VIEW 2 HDD BAYS

DAHUA: HDCVI DVR


DHU14060 (HCVR7816S)
16 Channel TRIBRID DVR

- IP/HDCVI/Analog
- 1080p @ 25/30fps per channel
- 1080p realtime view
- 8 HDD bays
- 2 IP ports


DHU14060 HCVR7816S

16 CHAN TRIBRID DVR, 1080P REALTIME VIEW, 8 HDD BAYS, 2 IP PORTS, 1080P @25/30 FPS PER CHANNEL


DHU14045 (HCVR7416L)
16 Channel TRIBRID DVR

- IP/HDCVI/Analog
- 1080p @ 25/30 fps per channel
- 1080p realtime view
- 4 HDD bays
- 2 IP ports


DHU14045 HCVR7416L

16 CHAN TRIBRID DVR, 1080P REALTIME VIEW, 4HDD BAYS, 2 IP PORTS, 1080P @25/30 FPS PER CHANNEL


DHU14315 (HCVR5816S-V2)
16 Channel TRIBRID DVR

- IP/HDCVI/Analog
- 1080p @ 12/15 fps per channel
- 720p realtime view
- 8 HDD bays
- 2 IP ports


DHU14315 HCVR5816S-V2

16 CHAN TRIBRID DVR, 720P REALTIME VIEW, 8 HDD BAYS, 2 IP PORTS, 1080P @12/15FPS PER CHANNEL

DAHUA: 4K


DHU13510 (IPC-HDBW4800E)
4K Mini IR Vandal Dome IP Camera

- 3840 x 2160 @ 7fps, 1080p @ 30fps
- 4mm lens
- ICR
- IP66, IK10
- Material: Metal
- PoE, 12V DC


DHU13510 IPC-HDBW4800E

4K MINI IR VANDAL DOME IP CAMERA, 4MM LENS, 3840X2160@7FPS, 1080P@30FPS,ICR


DHU13505 (IPC-HFW4800E)
4K Small IR Bullet IP Camera

- 1/2.3" 12MP Sony Exmor Sensor
- 3840 x 2160 @ 7fps, 1080p @ 30fps
- 4mm fixed lens
- ICR
- IP66
- Material: Plastic (upper cover) + Metal (the rest)
- PoE, 12V DC


DHU13505 IPC-HFW4800E

4K SMALL IR BULLET IP CAMERA, 4MM LENS, 1/2.3" 12M SONY EXMOR CMOS, ICR, 3840X2160@7FP, 1080P@30FPS


DHU13500 (IPC-HF81200E)
4K Box IP Camera

- 1/2.3" 12M Sony Exmor CMOS
- 15fps @ 12MP, 30fps @ 8MP
- ICR
- Material: Metal
- Use external housing for external use
- PoE, 12V DC/ 24V AC
- Lens not included; Recommended lens: DHU13501


DHU13500 IPC-HF81200E

4K BOX IP CAMERA, 1/2.3" 12M SONY EXMOR CMOS, 15FPS@12MP, 30FPS@8MP, ICR


DHU11545 (NVR4416-16P-4K)
16 Channel BENEFICIO 4K NVR

- 4 HDD bays
- 16 PoE
- 256m bandwidth
- Up to 12MP decoding
- 4ch 1080p + 1ch 4K, preview & playback


DHU11545 NVR4416-16P-4K

16 CH BENEFICIO 4K NVR, 4 HDD BAYS, 16POE, 256M BANDWIDTH, UP TO 12MP DECODING, 4CH 1080P+1CH 4K


DHU13501 (DV2.2X4.1SR4A-SA2L)
Lens

- 4K
- Image 1 1/8"
- F1.6
- 4.1~9mm
- For DHU13500 4K Box IP Camera


DHU13501 DV2.2X4.1SR4A-SA2L

LENS, 4K, IMAGE 1 1/8", F1.6, 4.1-9MM,

Note: Cameras with IP66 or IP67 ratings can be used externally.

DAHUA: IP Dome


**DHU10045-02
(IPC-HDW4100SP-0280B)**
Small IR Dome IP Camera


- 1.3MP Aptina CMOS
- 1.3MP/720p (1~30fps)
- 2.8mm lens
- ICR
- IP66
- Material: Metal (inner core) + Plastic (outside)
- PoE, 12V DC


DHU10045-02 IPC-HDW4100SP-0280B

SMALL IR DOME IP CAMERA, 2.8MM LENS, 1.3M APTINA COMS,ICR, 1.3M/720P(1~30FPS)


**DHU10045-03
(IPC-HDW4100SP-0360B)**
Small IR Dome IP Camera


- 1.3MP Aptina CMOS
- 1.3MP/720p (1~30fps)
- 3.6mm lens
- ICR
- IP66
- Material: Metal (inner core) + Plastic (outside)
- PoE, 12V DC


DHU10045-03 IPC-HDW4100SP-0360B

SMALL IR DOME IP CAMERA, 3.6MM LENS, 1.3M APTINA COMS,ICR, 1.3M/720P(1~30FPS)


**DHU10030-03
(IPC-HDW4100CP-0360B)**
Small IR Dome IP Camera


- 1.3MP Aptina CMOS
- 1.3MP/720p (1~30fps)
- 3.6mm lens
- ICR
- IP66, IK10
- 0.1Lux @ F1.6 (Color)
- PoE, 12V DC


DHU10030-03 IPC-HDW4100CP-0360B

SMALL IR DOME IP CAMERA, 3.6MM LENS, 1.3M APTINA CMOS,ICR, 1.3MP/720P(1~30FPS), 0.1LUX@F1.6(COLOR)


**DHU10210
(IPC-HDBW3110)**
Vandal Dome IR IP Camera


- 1.3 MP @ 20fps
- 3.3 ~ 12mm VF lens
- IR range 20m
- ICR
- IK10
- IP66
- PoE + dual power


DHU10210 IPC-HDBW3110

VANDAL DOME IR, 1.3 MP@20FPS 3.3~12MM VF LENS IR RANGE 20M ICR IK10 IP66 POE


**DHU10220
(IPC-HDB3110)**
Vandal Dome IP Camera


- 1.3 MP @ 20fps
- 3.3 ~ 12mm VF lens
- ICR
- IK10
- IP66
- PoE + dual power


DHU10220 IPC-HDB3110

VANDAL DOME 1.3 MP@20FPS, 3.3~12MM VF LENS ICR IK10 IP66 POE+ DUA


**DHU13355
(SD59120S-HN)**
1.3Mp HD Network IR PTZ Dome Camera


- 20x optical zoom
- Max. 25/30fps@1.3M(1280x9600) & 720P resolution
- Max 400°/s pan speed, 360° endless pan rotation
- Support intelligent 3D positioning with DH-SD protocol
- IR Distance up to 100m(AC24V)/80m(DC12V)


DHU13355 SD59120S-HN

SPEED DOME IP CAM, H1.3MP HD NETWORK IR PTZ


**DHU10065-03
(IPC-HDB4200CP-0360B)**
Vandal Dome IP Camera


- 2MP SONY Exmor CMOS
- 1080p (1~30fps)
- 3.6mm lens
- IP66, IK10
- PoE, 12V DC


DHU10065-03 IPC-HDB4200CP-0360B

VANDAL DOME IP CAMERA, 3.6MM LENS, 2M SONY EXMOR CMOS, 1080P(1~30FPS)


**DHU10065-06
(IPC-HDB4200CP-0600B)**
Vandal Dome IP Camera


- 2MP SONY Exmor CMOS
- 1080p (1~30fps)
- 6mm lens
- IP66, IK10
- PoE, 12V DC


DHU10065-06 IPC-HDB4200CP-0600B

VANDAL DOME IP CAMERA, 6MM LENS, 2M SONY EXMOR CMOS, 1080P(1~30FPS)

Note: Cameras with IP66 or IP67 ratings can be used externally.

DAHUA: IP Dome


DHU10065-02
(IPC-HDB4200CP-0280B)
Vandal Mini Dome IP Camera


- 2MP SONY Exmor CMOS
- 1080p (1~30fps)
- 2.8mm lens
- IP66, IK10
- PoE, 12V DC


DHU10065-02 IPC-HDB4200CP-0280B

VANDAL DOME IP CAMERA, 2.8MM LENS, 2M SONY EXMOR CMOS, 1080P(1~30FPS)


DHU10035-06
(IPC-HDW4200CP-0600B)
Small IR Dome IP Camera


- 2MP SONY Exmor CMOS
- 1080p (1~30fps)
- 6mm lens
- ICR
- IP66, IK10
- PoE, 12V DC


DHU10035-06 IPC-HDW4200CP-0600B

SMALL IR DOME IP CAMERA, 6MM LENS, 2M SONY EXMOR CMOS, ICR, 1080P(1~30FPS)


DHU10690
(IPC-HDBW5202P)
IR Vandal Dome IP Camera


- 2MP SONY Exmor CMOS
- 1080p (1~30fps)
- 3~9mm Motorised
- ICR
- IP66, IK10
- PoE, 12V DC


DHU10690 IPC-HDBW5202P

IR VANDAL DOME IP CAMERA, 3~9MM MOTORISED, 2M SONY EXMOR CMOS, ICR, 1080P(1~30FPS)


DHU10050-03
(IPC-HDW4200SP-0360B)
Small IR Dome IP Camera


- 2MP SONY Exmor CMOS
- 1080p (1~30fps)
- 3.6mm lens
- ICR
- IP66
- Material: Metal (inner core) + Plastic (outside)
- PoE, 12V DC


DHU10050-03 IPC-HDW4200SP-0360B

SMALL IR DOME IP CAMERA, 3.6MM LENS, 2M SONY EXMOR CMOS, ICR, 1080P(1~30FPS)


DHU10040-03
(IPC-HDW4300CP-0360B)
Small IR Dome IP Camera


- 3MP Aptina CMOS
- 3MP (1~20fps), 1080p (1~30fps)
- 3.6mm lens
- ICR
- IP66, IK10
- PoE, 12V DC


DHU10040-03 IPC-HDW4300CP-0360B

SMALL IR DOME IP CAMERA, 3.6MM LENS, 3M APTINA CMOS, ICR, 3MP(1~20FPS), 1080P(1~30FPS)


DHU10140-03
(IPC-HDB4300F-PT)
Vandal PT Mini Dome IP Camera


- 3MP Aptina CMOS
- 3MP (1~20fps), 1080p (1~30fps)
- 3.6mm lens
- ICR
- IP66, IK10
- Material: Metal
- PoE, 12V DC


DHU10140-03 IPC-HDB4300F-PT

VANDAL PT MINIDOME IP CAMERA, 3.6MM LENS, 3M APTINA CMOS, ICR, 3MP(1~20FPS), 1080P(1~30FPS)


DHU10840
(IPC-HDBW3301P)
IR Vandal Dome IP Camera


- 3MP Aptina CMOS OR 3MP
- 1080p (1~30fps)
- 3.3~12mm VF lens
- ICR
- WDR
- IP66, IK10
- PoE, 12V DC


DHU10840 IPC-HDBW3301P

IR VANDAL DOME IP CAMERA, 3.3~12MM VF LENS, 3M APTINA CMOS, ICR, WDR, 1080P(1~30FPS)


DHU10055-03
(IPC-HDW4300SP-0360B)
Small IR Dome IP Camera


- 3MP Aptina CMOS
- 3MP(1~20fps), 1080P(1~30fps)
- 3.6mm lens
- ICR
- IP66
- Material: Metal(inner core) + Plastic (outside)
- PoE, 12V DC


DHU10055-03 IPC-HDW4300SP-0360B

SMALL IR DOME IP CAMERA, 3.6MM LENS, 3M APTINA CMOS, ICR, 3MP(1~20FPS), 1080P(1~30FPS)

Note: Cameras with IP66 or IP67 ratings can be used externally.

DAHUA: IP Dome



DHU10040-02
(IPC-HDW4300CP-0280B)
Small IR Dome IP Camera

- 3MP Aptina CMOS
- 3MP (1~20fps), 1080p (1~30fps)
- 2.8mm lens
- ICR
- IP66, IK10
- PoE, 12V DC



DHU10040-02 IPC-HDW4300CP-0280B

SMALL IR DOME IP CAMERA, 2.8MM LENS, 3M APTINA CMOS, ICR, 3MP(1~20FPS), 1080P(1~30FPS)



DHU10830 (IPC-HDBW5300P)
IR Vandal Dome IP Camera

- 3MP Aptina CMOS
- 3MP (1~20fps)
- 2.7~12mm VF lens
- ICR
- IP66, IK10
- PoE, 12V DC



DHU10830 IPC-HDBW5300P

IR VANDAL DOME IP CAMERA, 2.7~12MM VF LENS, 3M APTINA CMOS, ICR, 3MP(1~20FPS)



DHU10825 (IPC-HDBW5302P)
Vandal Dome IR IP Camera

- 3MP Aptina CMOS
- 3MP (1~20fps)
- 3~9mm motorised lens
- ICR
- IP66, IK10
- PoE, 12V DC



DHU10825 IPC-HDBW5302P

VANDAL DOME IP CAMERA, 3~9MM MOTORISED LENS, 3M APTINA CMOS, ICR, 3MP(1~20FPS)



DHU10915 (IPC-HDBW5502)
IR Vandal Dome IP Camera

- 1/2.5" 5MP CMOS
- 5MP/12fps, 1080p (1~25/30fps)
- 4~9mm motorised lens
- ICR
- IP66, IK10
- PoE, 12V DC



DHU10915 IPC-HDBW5502

IR VANDAL DOME IP CAMERA, 4~9MM MOTORISED LENS, 1/2.5" 5M CMOS, ICR, 5M/12FPS, 1080P(1~25/30FPS)

Note: Cameras with IP66 or IP67 ratings can be used externally.

DAHUA: IP Bullet


**DHU10781
(IPC-HFW2100P-0360B)**
IR Bullet Camera

- 1.3 MP @ 15fps
- 3.6mm fixed lens
- IR range 20m
- ICR
- IP66
- PoE, 12V DC


DHU10781 IPC-HFW2100P-0360B

OUTDOOR IR BULLET IP, 1.3MP 720P 3.6MM D/N IP66 POE


**DHU10015-03
(IPC-HFW4100SP-0360B)**
IR Bullet IP Camera

- 1.3MP Aptina CMOS
- 1.3MP/720p (1~30fps)
- 3.6mm lens
- ICR
- IP66
- Material: Plastic (upper cover) + Metal (the rest)
- PoE, 12V DC


DHU10015-03 IPC-HFW4100SP-0360B

IR BULLET IP CAMERA, 3.6MM LENS, 1.3M APTINA CMOS, ICR, 1.3MP/720P(1~30FPS)


**DHU10640 (IPC-HFW5100CP)
IR Bullet IP Camera**

- 1.3MP Aptina CMOS
- 1.3MP/720p (1~30fps)
- 2.8~12mm VF lens
- ICR
- WDR
- IP66
- Material: Plastic (upper cover) + Metal (the rest)
- PoE, 12V DC


DHU10640 IPC-HFW5100CP

IR BULLET IP CAMERA, 2.8~12MM VF LENS, 1.3M APTINA CMOS, ICR, WDR, 1.3M/720P(1~30FPS)


**DHU10780 (IPC-HFW5200CP)
IR Bullet IP Camera**

- 2MP SONY Exmor CMOS
- 1080p (1~30fps)
- 3 ~ 12mm vari focal lens
- ICR
- IP66
- PoE, 12V DC


DHU10780 IPC-HFW5200CP

IR BULLET IP CAMERA, 3.3~12MM VARI-FOCAL LENS, 2M SONY EXMOR CMOS, ICR, 1080P(1~30FPS)


**DHU10020-03
(IPC-HFW4200SP-0360B)**
IR Bullet Camera

- 2MP SONY Exmor CMOS
- 1080p (1~30fps)
- 3.6mm lens
- ICR
- IP66
- Material: Plastic (upper cover) + Metal (the rest)
- PoE, 12V DC


DHU10020-03 IPC-HFW4200SP-0360B

IR BULLET CAMERA, 3.6MM LENS, 2M SONY EXMOR CMOS, ICR, 1080P(1~30FPS)


**DHU13005
(HAC-HFW2220SP-036B)
2.4MP 1080P Water-proof IR HDCVI Camera**

- 1/2.8" 2.4Megapixel CMOS
- 25/30fps@1080P, 25/30/50/60fps@720P
- High speed, long distance real-time transmission
- HD and standard definition switchable
- OSD Menu, control over coaxial cable
- Day/Night(ICR), AWB, AGC, BLC, 3D-DNR
- 3.6mm fixed lens
- Max. IR LEDs length 30m, Smart IR
- IP66, DC12V


DHU13005 HAC-HFW2220SP-0360B

2MP 1080P WATER-PROOF HDCVI CAMERA

Note: Cameras with IP66 or IP67 ratings can be used externally.

DAHUA: IP Bullet

**DHU10890 (IPC-HFW5300CP)****IR Bullet IP Camera**

- 3MP Aptina CMOS
- 3MP/15fps, 1080p (1~25fps)
- 3.3 ~ 12mm VF lens
- ICR
- IP66
- PoE, 12V DC

**DHU10890 IPC-HFW5300CP**

IR BULLET IP CAMERA, 3.3~12MM VF LENS, 3M APTINA CMOS,ICR, 3M/15FPS,1080P(1~25FPS)

**DHU10870 (IPC-HFW5302CP)****IR Bullet IP Camera**

- 3MP Aptina CMOS
- 3MP/15fps, 1080p (1~25fps)
- 3~9mm motorized lens
- ICR
- IP66
- PoE, 12V DC

**DHU10870 IPC-HFW5302CP**

IR BULLET IP CAMERA, 3~9MM MOTORISED LENS, 3M APTINA CMOS,ICR, 3M/15FPS,1080P(1~25FPS)

**DHU10025-03 (IPC-HFW4300SP-0360B)****IR Bullet IP Camera**

- 3MP Aptina CMOS
- 3MP (1~20fps), 1080p (1~30fps)
- 3.6mm lens
- ICR
- IP66
- Material: Plastic (upper cover) + Metal (the rest)
- PoE, 12V DC

**DHU10025-03 IPC-HFW4300SP-0360B**

IR BULLET IP CAMERA, 3.6MM LENS, 3M APTINA CMOS,ICR, 3MP(1~20FPS),1080P(1~30FPS)

**DHU10925 (IPC-HFW5502C)****IR Bullet IP Camera**

- 1/2.5" 5MP CMOS
- 5MP/12fps, 1080p (1~25/30fps)
- 4 ~ 9mm motorized lens
- Auto iris
- ICR
- IP66
- Material: Plastic (upper cover) + Metal (the rest)
- PoE, 12V DC

**DHU10925 IPC-HFW5502C**

IR BULLET IP CAMERA, 4~9MM MOTORISED LENS, 1/2.5" 5M CMOS,ICR,5M/12FPS,1080P(1~25/30FPS)

Note: Cameras with IP66 or IP67 ratings can be used externally.

DAHUA: IP Box

**DHU10785 (IPC-HF5200P)****Box IP Camera**

- 2MP Sony Exmor CMOS
- 30fps @ 2MP
- ICR
- Use external housing for external use
- PoE, 12V DC
- No lens included

**DHU10785 IPC-HF5200P**

BOX IP CAMERA, 2M SONY EXMOR CMOS, 30FPS@2MP, ICR

**DHU10901 (IPC-HF3500)****Box IP Camera**

- 5 MP - 1/2" Sensor
- 5 MP @ 8fps
2 MP @ 25fps
- ICR
- DWDR
- Audio
- SD slot
- Alarm
- DI / DO
- Use external housing for external use
- PoE, 12V DC ~ 24V AC
- No lens included

**DHU10901 IPC-HF3500**

BOX CAMERA 5MP 1/2" 8FPS@5MP/25FPS@1080P ICR DWDR AUDIO SD SLOT ALARM DI/DO

DAHUA: IP PTZ


DHU13200 (SD65220-HNI)
PTZ IP Camera

- 2MP CMOS
- 30fps @ 1080p, 60fps @ 720p
- 4.7~94mm (20x zoom)
- ICR
- IP67
- 24V AC/3A (included)


DHU13200 SD65220-HNI

4.7~94MM (20X ZOOM), 2MP CMOS, 30FPS@1080P, 60FPS @720P, ICR


DHU13280 (SD6A230-HN)
PTZ IR IP Camera

- 2MP CMOS
- 30fps @ 1080p, 60fps @ 720p
- 4.3~129mm (30x zoom)
- ICR
- IR Range 150m
- IP66
- 24V AC/3A (included)


DHU13280 SD6A230-HN

PTZ IR IP CAMERA, 4.3~129MM (30X ZOOM), 2MP CMOS, 30FPS@1080P, 60FPS@720P, ICR


DHU13270 (SD6A320-HN)
PTZ IR IP Camera

- 3MP CMOS
- 15fps @ 3MP, 30fps @ 1080p
- 4.7~94mm (20x zoom)
- ICR
- WDR
- IR Range 150m
- IP66
- 24V AC/3A (included)


DHU13270 SD6A320-HN

PTZ IR IP CAMERA, 4.7~94MM (20X ZOOM), 3MP CMOS, 15FPS@3MP, 30FPS@1080P, ICR, WDR


DHU13240 (SD65320-HN)
PTZ IP Camera

- 3MP CMOS
- 15fps @ 3MP, 30fps @ 1080p
- 4.7~94mm (20x zoom)
- ICR
- WDR
- IP67
- 24V AC/3A (included)


DHU13240 SD65320-HN

PTZ IP CAMERA, 4.7~94MM (20X ZOOM), 3MP CMOS, 15FPS@3MP, 30FPS@1080P, ICR, WDR


DHU13316 (SD6AL230FP-HNI)
PTZ Low Light IP Camera

- Powerful 30x optical zoom
- Ultra-low light star light camera
- H.264 & MJPEG Three-stream encoding
- Max 60fps@720P and 30fps@1080P resolution
- Defog, WDR, EIS, ROI, Day/Night(ICR), DNR (2D&3D),
- Auto iris, Auto focus, AWB, AGC, BLC
- Auto-tracking and IVS
- Multiple network monitoring: Web viewer, CMS(DSS/PSS) & DMSS
- Max 240°/s pan speed, 360° endless pan rotation
- Up to 255 presets, 5 auto scan, 8 tour, 5 pattern
- Built-in 7/2 alarm in/out
- Support intelligent 3D positioning with DH-SD protocol
- Micro SD memory, IP67, Hi-POE
- IR Distance up to 500m


DHU13316 SD6AL230FP-HNI

PTZ LOW LIGHT IP CAM, 2MP@25FPS, 30X OPT ZOOM, IR-600M, ICR, WDR


DHU13317 (SD6AL240P-HNI)
PTZ Low Light IP Camera

- Powerful 40x optical zoom
- H.264 & MJPEG Three-stream encoding
- Max 60fps@720P and 30fps@1080P resolution
- Defog, EIS, ROI, DWDR, Day/Night(ICR), DNR (2D&3D), Auto iris, Auto focus, AWB, AGC, BLC
- Auto-tracking and IVS
- Multiple network monitoring: Web viewer, CMS(DSS/PSS) & DMSS
- Max 240°/s pan speed, 360° endless pan rotation
- Up to 255 presets, 5 auto scan, 8 tour, 5 pattern
- Built-in 7/2 alarm in/out
- Support Auto tracking and IVS
- Support intelligent 3D positioning with DH-SD protocol
- Micro SD memory, IP66
- IR Distance up to 500m


DHU13317 SD6AL240P-HNI

PTZ IP CAM, 2MP@25FPS, 40X OPT ZOOM, IR-500M

Note: Cameras with IP66 or IP67 ratings can be used externally.

DAHUA: IP NVR


DHU11400 (NVR3208V-P)
NVR 4 Channel (8 Channel Capable)

- 2 HDD bays
- Up to 2 MP recording resolution
- Desktop case
- 4 Port PoE switch
- REC-BW 40Mbps


DHU11400 NVR3208V-P

NVR 4 CH W/4 PORT POE SW, REC-BW 40MBPS, MAX RES 2MP, 2 HDD BAYS V CASE


DHU11310 (NVR4216-P)
NVR 4 Channel

- 2 HDD bays
- 4 PoE
- 128Mbps incoming Bandwidth
- Up to 5 MP recording resolution
- 4ch 1080p preview & playback


DHU11310 NVR4216-P

4 CHAN NVR, 2HDD BAYS, 4POE 128M BANDWIDTH, UP TO 2MP, 4CH 1080P PREVIEW&PLAYBACK


DHU11220 (NVR4108-P)
Smart Case 4 Channel NVR

- 1 HDD bay
- 4 PoE
- 80Mbps incoming Bandwidth
- Up to 5MP recording resolution
- 4ch 1080p/8ch 720p preview & playback


DHU11220 NVR4108-P

SMART CASE 4 CHAN NVR 1HDD BAY, 4POE, 80M BANDWIDTH, UP TO 5MP, 4CH 1080P / 8CH 720P PREVIEW&


DHU11255 (NVR4104H-P)
4 Channel Mini NVR

- 1 HDD bay
- 4 PoE
- 80Mbps incoming bandwidth
- Up to 5MP recording resolution
- 1080p/8ch 720p preview & playback


DHU11255 NVR4104H-P

4 CHAN MINI NVR, 1HDD BAY, 4POE, 80M BANDWIDTH, UP TO 5MP DECODING, 1080P/8CH 720P PREVIEW&PLAYBACK


DHU11300 (NVR4204-P)
4 Channel NVR

- 2 HDD bays
- 4 PoE
- 128Mbps incoming bandwidth
- Up to 2MP recording resolution


DHU11300 NVR4204-P

4 CHAN NVR, 2HDD BAYS, 4POE, 128M BANDWIDTH, UP TO 1080P RECORDING RESOLUTION


DHU11715 (NVR5208-8P)
8 Channel NVR

- 2 HDD bays
- 8 PoE
- 160Mbps incoming bandwidth
- Up to 5MP recording resolution
- 8ch 1080p preview


DHU11715 NVR5208-8P

8 CHAN NVR, 2HDD BAYS, 8POE, 160M BANDWIDTH, UP TO 5M RECORDING RESOLUTION; 8CH 1080P PREVIEW


DHU11320 (NVR4208-8P)
8 Channel NVR

- 2 HDD bays
- 8 PoE
- 128Mbps incoming bandwidth
- Up to 2MP recording resolution


DHU11320 NVR4208-P

8 CHAN NVR, 2HDD BAYS, 8POE, 128M BANDWIDTH, UP TO 1080P RECORDING RESOLUTION


DHU11325 (NVR4216-8P)
8 Channel NVR

- 2 HDD bays
- 8 PoE
- 128Mbps incoming Bandwidth
- Up to 2MP recording resolution
- 4ch 1080p preview & playback


DHU11325 NVR4216-8P

8 CHAN NVR, 2HDD BAYS, 8POE 128M BANDWIDTH, UP TO 2MP, 4CH 1080P PREVIEW&PLAYBACK,

DAHUA: IP NVR


DHU11350 (NVR4408-8P)
8 Channel NVR

- 4 HDD bays
- 8 PoE
- 200Mbps incoming bandwidth
- Up to 5MP decoding
- 4ch 1080p/8ch 720p/16ch D1 preview & playback


DHU11350 NVR4408-8P

8 CH NVR, 4HDD BAYS, 8POE, 200M BANDWIDTH, UP TO 5MP DECODING, 4CH 1080P/8CH 720P/16CH D1


DHU11765 (NVR5432-16P)
16 Channel NVR

- 4 HDD bays
- 16 PoE
- 160Mbps incoming bandwidth
- Up to 5MP recording resolution
- 8ch 1080p preview


DHU11765 NVR5432-16P

16 CHAN NVR 4HDD BAYS, 16POE, 160M BANDWIDTH, UP TO 5M RECORDING RESOLUTION, 8CH 1080P PREVIEW


DHU11760 (NVR5416-16P)
16 Channel NVR

- 4 HDD bays
- 16 PoE
- 160Mbps incoming bandwidth
- Up to 5MP recording resolution
- 8ch 1080p preview


DHU11760 NVR5416-16P

16CHAN NVR, 4HDD BAYS, 16POE 160M BANDWIDTH, UP TO 5M RECORDING RESOLUTION; 8CH 1080P PREVIEW


DHU11370 (NVR4432-16P)
16 Channel NVR

- 4 HDD bays
- 16 PoE
- 200Mbps incoming Bandwidth
- Up to 5MP recording resolution
- 4ch 1080p/8ch 720p/16ch D1 preview & playback


DHU11370 NVR4432-16P

16 CHAN NVR 4HDD BAYS, 16POE, 200M BANDWIDTH, UP TO 5MP, 4CH 1080P/8CH 720P/16CH D1 PREVIEW&PLAYBACK


DHU11780 (NVR5832)
32 Channel NVR

- 8 HDD bays
- 160Mbps incoming Bandwidth
- Up to 5MP recording resolution
- 8ch 1080p preview & playback


DHU11780 NVR5832

2U 8HDD 160M BANDWIDTH UP TO 5M RECORDING RESOLUTION; 8CH 1080P


DHU11385 (NVR4832)
32 Channel NVR

- 8 HDD bays
- No PoE
- 200Mbps incoming Bandwidth
- Up to 5MP recording resolution
- 4ch 1080p/8ch 720p/16ch D1 preview & playback


DHU11385 NVR4832

32 CHAN NVR 8HDD BAYS, NO POE, 200M BANDWIDTH, UP TO 5MP, 4CH 1080P/8CH 720P/16CH D1 PREVIEW&PLAYBACK


DHU11410 (ESS1504A)
E-SATA Storage Unit For Dahua NVRs

- 4 bays
- 16 TB max
- 1.5 RU


DHU11410 ESS1504A

E-SATA STORAGE UNIT FOR SMARTVIEW NVR, 4 BAYS, 16TB MAX 1.5RU

DAHUA: Decoder/Encoder


DHU31000 (NVS1604HF-A-E)
16 Channel 960H Network Video Encoder


- Full channel@960H realtime encoding
- Supports TV, VGA, HDMI synchronous display
- Supports quota video, multi-channel video synchronous playback
- Supports Mark Playback
- Supports high quality two-way talk
- 16 channel video and audio inputs


DHU31000 NVS1604HF-A-E

ENCODER, NETWORK VIDEO, 16 CHANNEL, 960H


DHU30000 (NVS0104DH)
1/4 Channel Full HD Network Video Decoder


- Full HD standalone network video decoder for TV wall monitoring system
- Support multiple devices: Network camera, DVR, NVS
- H.264/MPEG-4 dual codec video decoding
- Supports multiple resolution decoding: QCIF/CIF/2CIF/ HD1/D1/720P/1080P
- Up to 1080P display output & various interface: HDMI, VGA and BNC
- Supports various split-window modes
- Alarm input/output, RS232, RS485
- Powerful 1000M Ethernet interface
- WEB GUI interface for easy setup and control
- Standard 19-inch 1U chassis for easy installation


DHU30000 NVS0104DH

DECODER, SINGLE OUTPUT, 25 FPS@1080P 4X IP CAMS (16 CAMS@D1) 1/4/9/16 DISPLAY


DHU30005 (NVS0404DH)
1/4 Channel Full HD Network Video Decoder


- Full HD standalone network video decoder for TV wall monitoring system
- Support multiple devices: Network camera, DVR, NVS
- H.264/MPEG-4 dual codec video decoding
- Supports multiple resolution decoding: QCIF/CIF/2CIF/ HD1/D1/720P/1080P
- Up to 1080P display output & various interface: HDMI, VGA and BNC
- Supports various split-window modes
- Alarm input/output, RS232, RS485
- Powerful 1000M Ethernet interface
- WEB GUI interface for easy setup and control
- Standard 19-inch 1U chassis for easy installation


DHU30005 NVS0404DH

DECODER 4 O/P/UTS, 25 FPS@1080P 7X IP CAMS (28 CAMS@D1) 1/4/9/16 DISPLAY-RACK

DAHUA: Brackets


DHU13615 (PFB201W)
Wall Mount Bracket Angle

- For small domes (direct fit)
- White


DHU13615 PFB201W

WALL MOUNT BRACKET, ANGLE, FOR DOMES (DIRECT FIT)


DHU13620 (PFB300S)
Wall Mount Bracket Gooseneck

- For domes (use with hanging mount)
- White


DHU13620 PFB300S

WALL MOUNT BRACKET, GOOSNECK, FOR DOMES (USE WITH HANGING MOUNT)


DHU13675 (PFA100)
Hanging Mount Adapter

- For large dome
- To be used with the DHU13620 and DHU13625 brackets
- White


DHU13675 PFA100

HANGING MOUNT ADAPTER


DHU13645 (PFA120)
Back Box Rectangular

- IP66
- White


DHU13645 PFA120

BACK BOX RECTANGULAR IP66


DHU13795 (PFB601W)
Ceiling Bracket

DHU13795 PFB601W

CEILING BRACKET


DHU13650 (PFB300C)
Dropper Pole

- Dropper pole ceiling mount
- 235mm length
- White


DHU13650 PFB300C

DROPPER POLE, CEILING MOUNT, 235MM


DHU13660 (PFA112)
Dropper Pole Extension

- 220mm length
- Use with DHU13650
- Aluminium
- White
- Dimensions (mm): 53 Ø x 220 (L)


DHU13660 PFA112

DROPPER POLE, EXTENSION, 220MM LONG, WHITE


DHU13665 (PFA113)
Dropper Pole Extension

- 420mm length
- Use with DHU13650
- Aluminium
- White
- Dimensions (mm): 53 Ø x 420 (L)

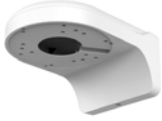

DHU13665 PFA113

DROPPER POLE, EXTENSION, 420MM LONG, WHITE

DAHUA: Brackets


DHU13610 (PFB200W)
Wall Mount Bracket Short

- For mini domes


DHU13610 PFB200W

WALL MOUNT BRACKET, SHORT, FOR MINI DOMES


DHU13625 (PFB300W)
Wall Mount Bracket Angle

- For domes (use with hanging mount)


DHU13625 PFB300W

WALL MOUNT BRACKET, ANGLE, FOR DOMES (USE WITH HANGING MOUNT)


DHU13680 (PFA101)
Hanging Mount Adapter

- For domes


DHU13680 PFA101

HANGING MOUNT ADAPTER (FOR DOMES)


DHU13745 (PFA150)
Pole Mount Bracket

DHU13745 PFA150

POLE MOUNT BRACKET


DHU13755 (PFA151)
Corner Bracket External

DHU13755 PFA151

CORNER MOUNT BRACKET


DHU13790 (PFB600W)
Ceiling Bracket

- Managed
- Short
- For PFH610N / PFN610N-IR housing


DHU13790 PFB600W

CEILING BRACKET, MANAGED, SHORT, FOR PFH610N / PFN610N-IR HOUSING


DHU13800 (PFB602W)
Wall Bracket

- Managed
- For PFH610N / PFN610N-IR housing


DHU13800 PFB602W

WALL BRACKET, MANAGED, FOR PFH610N / PFN610N-IR HOUSING


DHU13670 (PFB301S)
Parapet Mount Bracket

DHU13670 PFB301S

PARAPET MOUNT BRACKET

DAHUA: Brackets, Housings



DHU13720 (PFA130)
Junction box



DHU13720 PFA130

JUNCTION BOX



DHU13725 (PFA131)
Back Box Circular



DHU13725 PFA131

BACK BOX CIRCULAR



DHU13765 (PFH610N)
External Housing



- For box camera and zoom camera
- Max camera length 255mm
- IP66
- 12VDC / 24VAC

DHU13765 PFH610N

EXTERNAL HOUSING MAX CAM LENGTH 255MM 12VDC / 24VAC



DHU13780 (PFH610N-IR)
External Housing With IR



- For box camera and zoom camera
- Max camera length 215mm
- IP66
- 24VAC

DHU13780 PFH610N-IR

EXTERNAL HOUSING WITH IR MAX CAM LENGTH 215MM 24VAC



LENS2800 (DH-SV1040GNBIRMP)

Lens Megapixel

- 10 ~ 40mm
- 1/2" F1.4
- DC auto iris
- CS mount



LENS2800 DH-SV1040GNBIRMP

LENS3 MEGAPIXEL 10~40MM 1/2.7" F1.4 DC AUTO IRIS CS MOUNT



LENS2810 (DH-RV03312D.IR)

Lens Megapixel

- 3.3 ~ 12mm
- 1/2.7" F1.4
- DC auto iris
- CS mount



LENS2810 DH-RV03312D.IR

LENS 2 MEGAPIXEL 3.3~12MM 1/2.7" F1.4 DC AUTO IRIS CS MOUNT



DHU13501 (DV2.2X4.1SR4A-SA2L)

Lens

- 4K
- Image 1 1/8"
- F1.6
- 4.1~9mm
- For DHU13500 4K Box IP Camera



4k

DHU13501 DV2.2X4.1SR4A-SA2L

LENS, 4K, IMAGE 1 1/8", F1.6, 4.1-9MM,

DAHUA: Keyboards

**KBD2000 (NKB1000)****Keyboard for PTZ**

- RJ-45, RS232-485
 - 3D Joystick
 - Menu display screen
 - 12V DC, 5W
- Plug pack included

KBD2000 NKB1000

KEYBOARD FOR PTZ RJ-45 RS232/485 3D JOYSTICK MENU DISPLAY 12VDC /5W PLUG PACK INCL

**KBD2010 (NKB3000)****Network Keyboard for PTZ**

- RJ-45, RS232-485
 - 4D Joystick
 - 1082p display screen
 - 12V DC, 5W
- Plug pack included

KBD2010 NKB3000

NETWORK KEYBOARD FOR PTZ RJ-45 RS232/485 4D JOYSTICK 1082P DISPLAY

Specialised Cameras


DHU10930 (IPC-EBW81200)
12M Ultra HD Vandal-proof IR Network Fisheye Camera


- 1/2.3" 12MP progressive scan CMOS
- H.264 & MJPEG dual-stream encoding
- Max 15fps@12MP(4000x3000), 25/30fps@3MP(2048x1536)
- Multiple Correct Mode: Original, Panoramic, Double Panoramic, 1+3, Eptz, 4 pictures
- DWDR, Day/Night(ICR), 3DNR, ROI, AWB, AGC, BLC
- Multiple network monitoring: Web viewer, CMS(DSS/PSS) & DMSS
- Max.IR LEDs Length 10m
- 1/1 Audio in/out (Built in Mic)
- Micro SD memory,IP67,IK10,PoE


DHU10930 IPC-EBW81200

1/2.3" 12M SONY EXMOR CMOS


DHU10935 (IPC-EBW8600)
6M Full HD Vandal-proof IR Network Fisheye Camera


- 1/1.8" 6MP progressive scan CMOS
- H.264 & MJPEG dual-stream encoding
- Max 25/30fps@6.0MP(3072x2048)
- Multiple De-wrap Mode: Original, Panoramic, Double Panoramic, 1+3, Eptz, 4 pictures
- DWDR, Day/Night(ICR), 3DNR, ROI, AWB, AGC, BLC
- Multiple network monitoring: Web viewer, CMS(DSS/PSS) & DMSS
- Max.IR LEDs Length 10m
- 1/1 Audio in/out (Built in Mic)
- Micro SD memory,IP67,IK10,PoE


DHU10935 IPC-EBW8600

1/2" 6M SONY EXMOR CMOS


DHU10937 (IPC-EB5400)
4 MP Vandal-proof Network Fisheye Camera


- 1/3" 4Megapixel progressive scan CMOS
- H.264 & MJPEG dual-stream encoding
- Max 15fps@4MP (2592x1520), 25/30fps@1080P
- Day/Night(Electronic), 3DNR, AWB,AGC,BLC
- Multiple network monitoring: Web viewer, CMS(DSS/PSS) & DMSS
- 1.18mm fixed lens
- Micro SD memory, IK10, PoE


DHU10937 IPC-EB5400

1/3" 4M CMOS,H.264/MJPEG, 1080P(1~30FPS),1.18MM/F2.0 FISHEYE LENS


DHU13840 (IPC-HUM8101)
1 MP HD Pinhole Network Camera


- 1/3" 1.3MP progressive scan CMOS
- H.264 & MJPEG dual-stream encoding
- Max 25/30fps@1.3MP (1280x960)
- Day/Night(Electronic), 3DNR, AWB,AGC,BLC
- Smart detection:
 - Face detection
 - Tripwire detection
 - Intrusion detection
 - Scene change detection
- 3.6mm fixed lens
- Micro SD memory, PoE


DHU13840 IPC-HUM8101

PINHOLE CAMERA, 1.3MEGA PIXEL

Dahua: Mobile NVR Systems



DHU17270 (NVR0404MF-GCW2.0)

DHU17275 (NVR0404MF-GCCWI)

4 Channel PoE Mobile Network Video Recorder

- Up to 4 channel 1080P cameras realtime live view
- H.264/MJPEG dual codec decoding
- 100/120fps@1080p preview & recording
- All channel synchronous realtime playback, GRID interface
- ONVIF Version 2.0 conformance
- Multi-information display and recording: Car Number, Time, Channel, GPS, Speed, support freely setting of overlay and recording
- Multiple network monitoring: Web viewer, CMS(DSS/PSS) & DMSS
- 3D intelligent positioning with Dahua PTZ camera
- Built-in module (GPS/3G/Wi-Fi optional)
- Supports 2 SATA HDDs, 2 USB2.0
- 4 PoE ports, Aviation connectors
- Built-in wide voltage input module (8~36V)



DHU17270 NVR0404MF-GCW(2.0)

NVR 2.0 SERIES, 4 CH MOBILE, FULL CH 1080P

DHU17275 NVR0404MF-GCCWI

NVR SMART SERIES, 4 CH MOBILE, FULL CH1080P, REALTIME

NOTES



seadan 
security & electronics
You're in very secure company

CCTV

VIC Unit 7, 170 Forster Road, Mt Waverley VIC 3149
NSW Unit 5, 142 James Ruse Drive, Parramatta NSW 2150
QLD 15-19 Hudson Road, Albion QLD 4010
WA Unit 4, 200 Balcatta Road, Balcatta WA 6021
ACT Unit 2, 157-161 Gladstone Street, Fyshwick ACT 2609

1300 366 851 | cctv@seadan.com.au | www.seadan.com.au