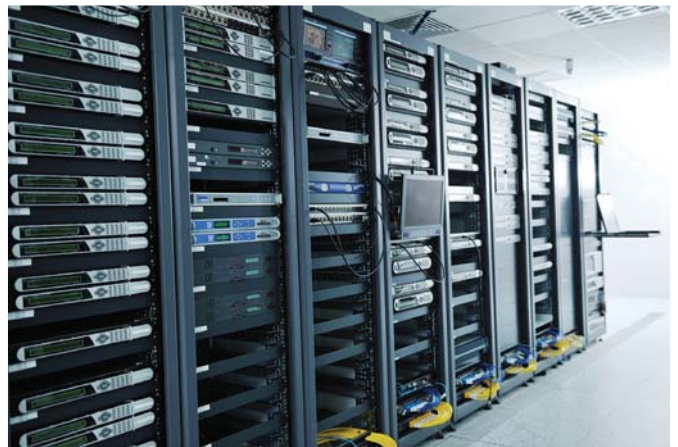


## On Line Uninterruptible Power Supply

### ARTon Alfa Series 3.1 10-20-30 kVA



### Specifications

- True double-conversion
- DSP technology guarantees high performance
- Output power factor 0.9
- Wide input voltage range (110-300 VAC)
- Active power factor correction in all phases
- Built-in phase auto adapt function simplifies wire installation
- 50Hz/60Hz frequency converter mode
- ECO mode operation for energy saving
- Programmable power management outlets
- Emergency power off function (EPO)
- Generator compatible
- SNMP+USB+RS-232 multiple communications
- 3-stage extendable charging design for optimized battery performance
- Adjustable battery numbers
- Maintenance bypass available
- Optional N+X parallel redundancy

General Application Areas:



Finance



Medical



Industry



Datacenter



ARTon Alfa 3/1-30K

ARTon Alfa 3/1-30KL

ARTon Alfa 3/1-20K

ARTon Alfa 3/1-10K(L)  
ARTon Alfa 3/1-20KL

# ARTon Alfa Series 3.1 10-20-30 kVA Technical Specifications

MODEL		ARTon Alfa 3/1-10K (L)	ARTon Alfa 3/1-20K (L)	ARTon Alfa 3/1-30K (L)
PHASE		3-phase in / 1-phase out		
CAPACITY		10000 VA / 9000 W	20000 VA / 18000 W	30000 VA / 27000 W
Nominal Voltage		3 x 400 VAC (3Ph+N)		
Voltage Range		190-520 VAC (3-phase) @ 50% load ; 305-478 VAC (3-phase) @ 100% load		
Frequency Range		46-54Hz or 56-64Hz		
Power Factor		≥ 0.99 @ 100% Load		
THDi		< 6% @ 100% load		
Output Voltage		208/220/230/240VAC		
AC Voltage Regulation (Batt. Mode)		± 1%		
Frequency Range (Synchronized Range)		46-54Hz or 56-64Hz		
Frequency Range (Batt. Mode)		50 Hz ± 0.1 Hz or 60 Hz ± 0.1 Hz		
Current Crest Ratio		3:1 (max.)		
Harmonic Distortion		≤ 2% THD (Linear Load) ≤ 5% THD (Non-linear Load)		
Transfer Time	AC Mode to Batt. Mode	Zero		
	Inverter to Bypass	Zero		
Waveform (Batt. Mode)		Pure Sinewave		
AC Mode		91.5%	91.8%	92.1%
ECO Mode		97%	97%	97%
Battery Mode		87%	88%	89%
Standard Model	Battery Type	12 V / 9 Ah		
	Numbers	20 pcs (18 - 20 pcs adjustable)*	20 pcs (18 - 20 pcs adjustable)* x 2 strings	20pcs(18-20pcs adjustable)* x3 strings
	Typical Recharge Time	9 hours recover to 90% capacity		
	Charging Current (max.)	1A	4A (set as 2A)	4A
	Charging Voltage	273 VDC ± 1% (Based on 20pcs batteries)		
Long-run Model	Battery Type	Depending on applications		
	Numbers			
	Charging Current (max.)	4A	8A	12A
	Charging Voltage	273 VDC ± 1% (Based on 20pcs batteries)		
LCD Display		UPS status, Load level, Battery level, Input/Output voltage, Discharge timer, and Fault conditions		
Battery Mode		Sounding every 4 seconds		
Low Battery		Sounding every second		
Overload		Sounding twice every second		
Fault		Continuously sounding		
Standard Model	Dimension, D X W X H (mm)	592 x 250 x 576	815 x 250 x 826	815 x 300 x 1000
	Net Weight (kgs)	83	164	234
Long-run Model	Dimension, D X W X H (mm)	592 x 250 x 576	592 x 250 x 576	815 x 250 x 826
	Net Weight (kgs)	28	40	64
Humidity		0-95 % RH @ 0- 40°C (Non-condensing)		
Noise Level		Less than 58dB @ 1 Meter	Less than 60dB @1 Meter	Less than 65dB @1 Meter
Smart RS-232 / USB		Supports Windows <sup>2</sup> 2000/2003/XP/Vista/ 2008, Windows <sup>2</sup> 7/8, Linux, Unix, and MAC		
Optional SNMP		Power management from SNMP manager and web browser		

\* L means long-run model.

\*\*When using internal batteries from 18-19, the unit will de-rate according to below formula: P = P<sub>Rating</sub> x N/20.

\*\*Derate capacity to 90% of capacity when the output voltage is adjusted to 208VAC.

Product specifications are subject to change without further notice

# ARTronic®

The art of electronics

Phone: +90 (216) 365 82 21 / Fax: +90 (216) 592 44 40

artronic@artronic.com.tr [www.artronic.com.tr](http://www.artronic.com.tr)