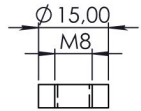
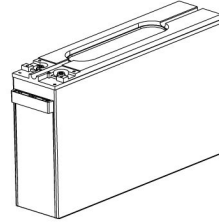
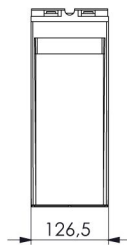
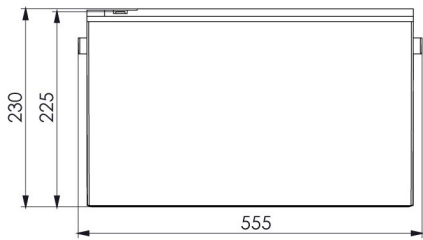




- 🔊 Long-term storage, high performance
- 🔊 Stable quality and high reliability performance
- 🔊 Special grid alloy and advanced technology
- 🔊 12+ year life expectancy, maintenance free
- 🔊 Excellent sealing strength with thermal adhesion
- 🔊 99% recombination ability
- 🔊 100% quality control approved M18 valve use
- 🔊 Superior AGM (Absorbed Glass Matt) Technology
- 🔊 Use of ABS-FR material conforming to UL94
- 🔊 Design according to 23" 48VDC cabinet standards
- 🔊 Complies with TS EN 60896-21/22 standards

Applications

- 🌐 Telecommunication
- 🔌 Uninterruptible power supply (UPS)
- 🔌 Elektrik Power Systems
- 🚪 Emergency Lighting Systems
- 🚒 Alarm and Security System
- 📶 Communication Power Supply
- ⚡ Communication Power Supplies
- 🛡️ Otomatic Control Systems



Battery Code

YGY12-100 FT

Nominal Voltage

12V

Nominal Capacity [20°C]

C10	100.0Ah 1.80V/Cell
C5	88.7Ah 1.75V/Cell
C3	79.0Ah 1.70V/Cell
C1	67,9Ah 1.60V/Cell

Dimensions [mm]

Length	Width	Height	Total Height
555	126.5	225	230

Weight [kg]

39.0 kg

Int Resistance TS EN 60896-21

Max. 3.8 mΩ @25°C

Self Discharge

Max. %3Ah/Month @25°C

Storage Life

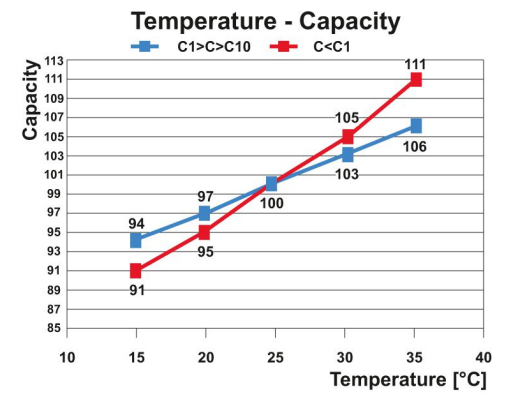
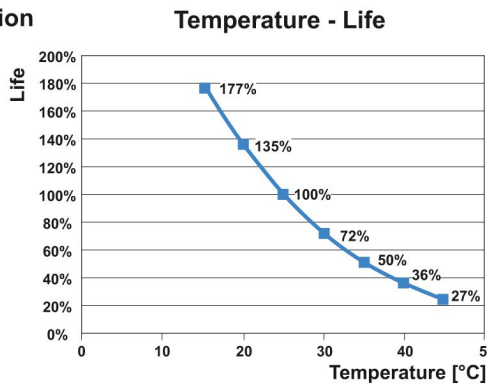
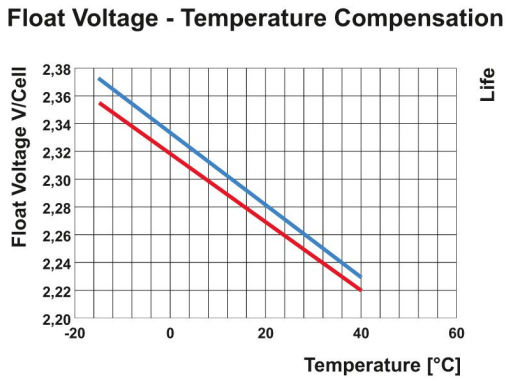
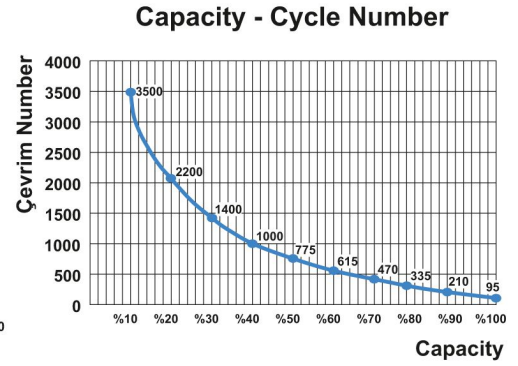
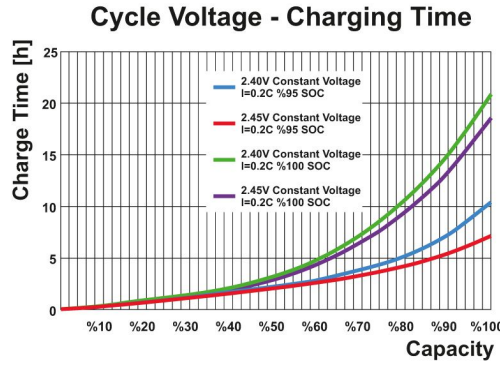
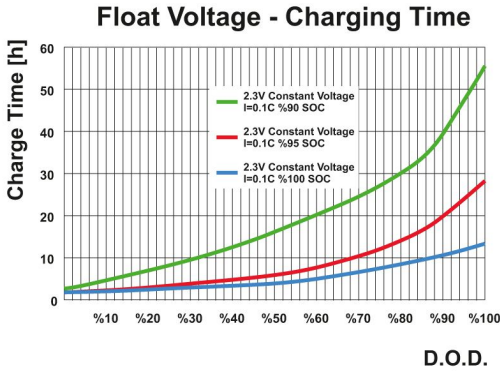
6 Month @25°C Requires charging after 6 months of standby.

Recommended Operating Temperature

-10/+45°C

Maximum Operating Temperature

-20/+55°C



Constant Current - Discharge Table [Ah] @20°C

Cutting Voltage V/Cell	15m	20m	30m	1h	2h	3h	4h	5h	6h	7h	8h	10h	20h
1,60	176,40	150,06	113,68	67,95	37,31	26,66	21,30	17,77	15,42	13,72	12,22	10,06	5,38
1,65	169,87	145,50	111,07	66,64	36,91	26,53	21,17	17,77	15,35	13,65	12,22	10,00	5,36
1,70	163,99	140,14	107,80	65,99	36,39	26,33	20,97	17,71	15,29	13,59	12,15	10,00	5,36
1,75	154,19	132,32	102,57	63,77	35,80	25,94	20,78	17,57	15,22	13,46	12,09	9,93	5,33
1,80	139,16	121,97	96,04	61,22	34,63	25,48	20,38	17,31	15,03	13,33	11,96	9,80	5,29
1,85	120,21	108,62	86,89	55,79	32,21	23,45	19,08	16,07	13,92	12,35	11,04	9,02	4,77

Constant Power - Discharge Table [Watt/Cell] @20°C

Cutting Voltage V/Cell	15m	20m	30m	1h	2h	3h	4h	5h	6h	7h	8h	10h	20h
1,60	309,03	266,29	206,9	124,79	70,13	49,85	38,98	32,45	28,06	24,92	22,68	19,27	10,60
1,65	299,88	259,02	201,03	122,62	69,91	49,72	38,86	32,43	28,00	24,83	22,70	19,25	10,58
1,70	290,73	250,85	196,65	121,61	69,91	49,39	38,55	32,22	27,85	24,76	22,63	19,28	10,57
1,75	278,32	240,70	189,47	118,25	69,25	48,50	38,22	31,99	27,70	24,57	22,54	19,19	10,55
1,80	258,07	226,85	179,67	114,99	67,63	48,02	37,55	31,56	27,31	24,35	22,32	18,98	10,49
1,85	226,71	204,89	163,99	106,49	63,19	45,41	35,87	29,88	25,68	22,80	20,83	17,54	9,48