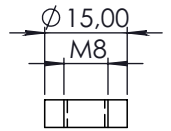
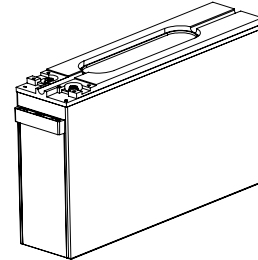
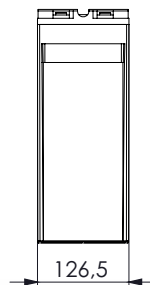
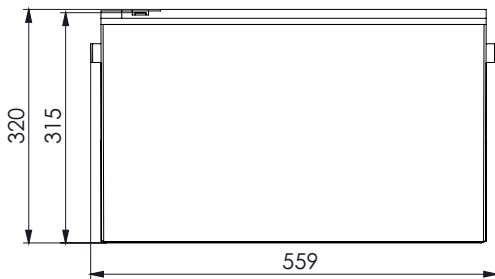




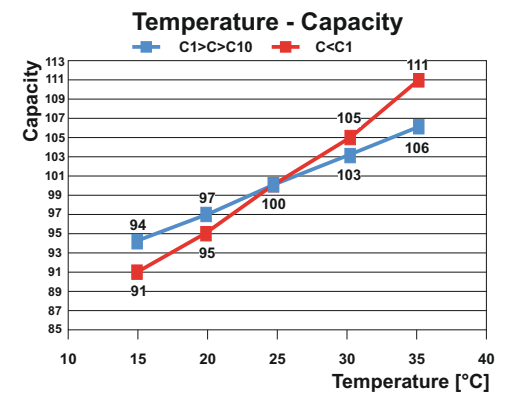
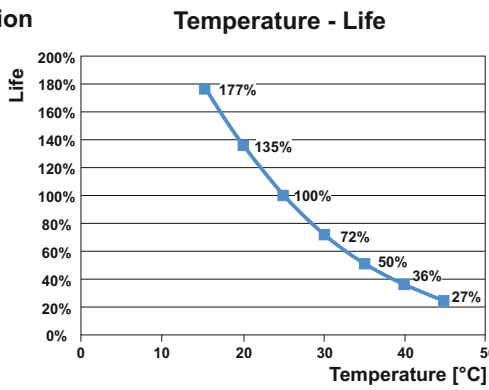
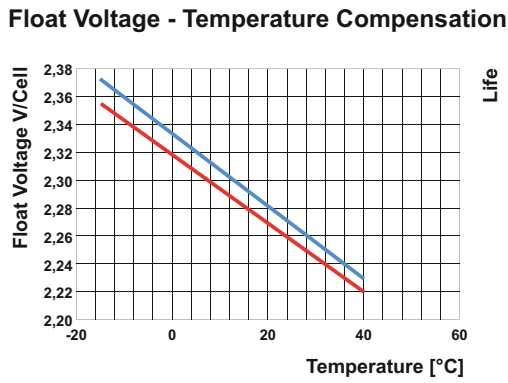
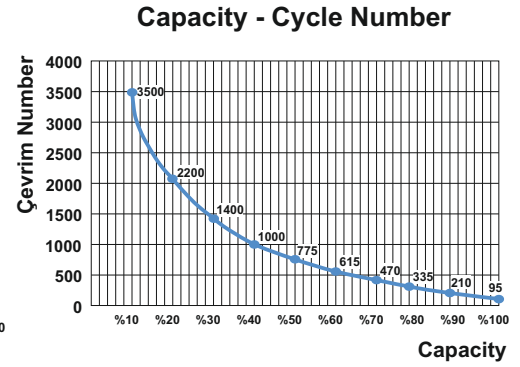
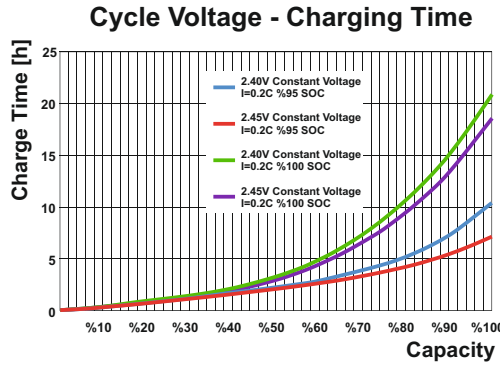
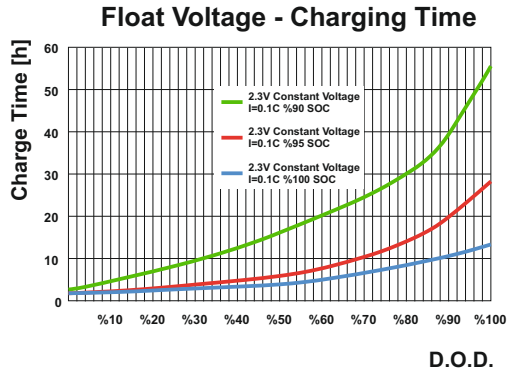
- 🔊 Long-term storage, high performance
- 🔊 Stable quality and high reliability performance
- 🔊 Special grid alloy and advanced technology
- 🔊 12+ year life expectancy, maintenance free
- 🔊 Excellent sealing strength with thermal adhesion
- 🔊 99% recombination ability
- 🔊 100% quality control approved M18 valve use
- 🔊 Superior AGM (Absorbed Glass Matt) Technology
- 🔊 Use of ABS-FR material conforming to UL94
- 🔊 Design according to 23" 48VDC cabinet standards
- 🔊 Complies with TS EN 60896-21/22 standards

Applications

- 🌐 Telecommunication
- 🔋 Uninterruptible power supply (UPS)
- 🏠 Elektrik Power Systems
- 🚪 Emergency Lighting Systems
- 🚒 Alarm and Security System
- 📡 Communication Power Supply
- ⚡ Communication Power Supplies
- 🛠 Otomatic Control Systems



Battery Code	YGY12-150 FT		
Nominal Voltage	12V		
Nominal Capacity [20°C]	C10	150.0Ah 1.80V/Cell	
	C5	133.0Ah 1.75V/Cell	
	C3	118.5Ah 1.70V/Cell	
	C1	101.9Ah 1.60V/Cell	
Dimensions [mm]	Length	Width	Heigh
	559 [±3]	126.5 [±2]	315 [±3]
Weight [kg]	52.8 kg [±%5]		
Int Resistance TS EN 60896-21	Max. 3.8 mΩ @25°C		
Self Discharge	Max. %3Ah/Month @25°C		
Storage Life	6 Month @25°C Requires charging after 6 months of standby.		
Recommended Operating Temperature	-10/+45°C		
Maximum Operating Temperature	-20/+55°C		



Constant Current - Discharge Table [Ah] @20°C

Ending Voltage V/Cell	15min	20min	30min	1h	2h	3h	4h	5h	6h	7h	8h	10h	20h
1,60	264,6	225,1	170,5	101,9	56,0	40,0	31,9	26,7	23,1	20,6	18,3	15,2	8,1
1,65	254,8	218,2	166,6	100,0	55,4	39,8	31,8	26,7	23,0	20,5	18,3	15,1	8,0
1,70	246,0	210,2	161,7	99,0	54,6	39,5	31,5	26,6	22,9	20,4	18,2	15,1	8,0
1,75	231,3	183,0	144,1	91,8	51,9	38,2	30,6	26,0	22,5	20,0	17,9	15,0	7,9
1,80	208,7	183,0	144,1	91,8	51,9	38,2	30,6	26,0	22,5	20,0	17,9	15,0	7,9
1,85	180,3	162,9	130,3	83,7	48,3	35,2	28,6	24,1	20,9	18,5	16,6	13,6	7,2

Constant Current - Discharge Table [Watt/Cell] @20°C

Ending Voltage V/Cell	15min	20min	30min	1h	2h	3h	4h	5h	6h	7h	8h	10h	20h
1,60	463,5	399,4	310,3	187,2	105,2	74,8	58,5	48,7	42,1	37,4	34,0	28,9	25,2
1,65	449,8	388,5	301,5	183,9	104,9	74,6	58,3	48,6	42,0	37,2	34,1	28,9	25,2
1,70	436,1	376,3	295,0	182,4	104,9	74,1	57,8	48,3	41,8	37,1	33,9	28,9	25,1
1,75	417,5	361,1	284,2	177,4	103,9	72,8	57,3	48,0	41,6	36,8	33,8	28,8	24,9
1,80	387,1	340,3	269,5	172,5	101,4	72,0	56,3	47,3	41,0	36,5	33,5	28,5	24,8
1,85	340,1	307,3	246,0	159,7	94,8	68,1	53,8	44,8	38,5	34,2	31,2	26,3	22,8