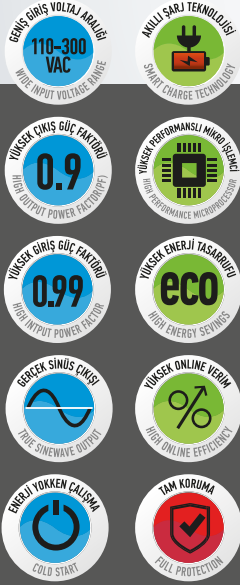


tuncmatik

LONG

1/2/3/6/10 kVA

ONLINE UPS (1/1)



Special design for applications requiring long support time

Long series, which can be connected to a large-capacity external battery for a long support time, has a much stronger charging capacity than normal products.

True double conversion online technology

Online UPS is the most suitable choice, especially for computers and other sensitive devices. This type of UPS completely isolates your sensitive devices from the mains and feeds your sensitive devices connected with the help of filters in the mains. As a result, all unwanted situations that may occur in the line are filtered by the online UPS and your sensitive devices are fed with pure power.

High output power factor

(1/2/3kVA PF=0.9; 6/10kVA PF=0.9)

The 1/2/3 kVA UPS provides 15% and the 6/10 kVA UPS provides 28% extra power at the output compared to the standard UPS which are 0.7 power factor. That's why, it supports more electrical/electronics devices.

Pure sinewave output

Full compatibility with all kinds of electrical devices, the ideal solution for your medical and similar critical applications.

Wide input voltage range (110-300 VAC)

Ability to work online even at very low and very high voltages without switching to the battery.

Input power factor correction (PF=0.99)

It does not impose an additional compensation load on your line. It saves on your electricity bills.

Intelligent charging technology for optimal battery performance

Since it charges the battery with a special charging technique, it extends the life of the battery, reduces your operating costs and provides savings.

High performance microprocessor

Thanks to the digital structure and high speed of the CPU-controlled control board is provides full protection by performing the protection functions of the UPS such as overload, short circuit, low-high voltage and over-temperature in a timely manner, thus ensuring that the UPS has a stable and reliable structure.

tuncmatik LONG 1/2/3/6/10 kVA ONLINE UPS (1/1)



MODEL		1 kVA	2 kVA	3 kVA	6 kVA	10 kVA
Phase		Single phase + earth				
Capacity (VA/Watts)		1000VA / 800W	2000VA / 1600W	3000VA / 2400W	6000VA/5400W	10000VA/9000W
INPUT						
Nominal voltage		200/208/220/230/240VAC			208/220/230/240VAC	
Voltage Range	Low voltage transfer	160Vac±5% @100%-80% load; 140Vac±5% @80%-70% load; 120Vac±5% @70%-60% load; 110Vac±5% @60%-0% load; (<35°C)			120~276Vac	
	Under voltage correction	175Vac±5% @100%-80% load; 155Vac±5% @80%-70% load; 135Vac±5% @70%-60% load; 125Vac±5% @60%-0% load; (<35°C)				
	High voltage transfer	300Vac ±5%			276Vac ±5% 320Vac, 1 hour (static)	
	High voltage correction	290Vac ±5%			276Vac ±5%	
Frequency range		40-70Hz			45-65Hz	
Power Factor		0.990 @100% load (Nominal input voltage)				
Feeding From Generator		Yes				
OUTPUT						
Output voltage		200/208/220/230/240Vac			208/220/230/240Vac	
Power Factor		0.8			0.9	
Voltage Regulation		±1% (Battery Mode)				
Frequency Range	Line Mode (synchronized)	47-53Hz veya 57-63Hz				
	Battery Mode	(50/60±0.1)Hz				
Crest Factor		3:1				
Harmonic Distortion (THDv)		≤3% THD linear load ≤6% THD non-linear load			≤2% THD linear load ≤5% THD non-linear load	
Waveflow		Pure Sinewave				
Transfer Time	AC mode ↔ Bat. mode	Zero				
	Inverter ↔bypass	4ms (Typical)				
Efficiency		>88% (AC mode) >83% (DC mode)	>89% (AC mode) >87% (DC mode)	>90% (AC mode) >88% (DC mode)	>90% (AC mode) >88% (DC mode)	
BATTERY						
Battery Quantity		2	4	6	16/18/20 pcs adjustable	
Charge Voltage		27.4 VDC ±1%	54.7 VDC ±1%	82.1 VDC ±1%	219/246/274 Vdc ±1%	
Charge Current		12A	12A	12A	6A	6A
SYSTEM FEATURES						
Overload	Line Mode	Ambient temperature.<35°C 105%-110%: KGK 10 minutes later transfers the load to the bypass. 110%-130%: KGK 1 minutes later transfers the load to the bypass. >130%: KGK 3 seconds later transfers the load to the bypass.				
	Bypass Mode	8A(Input Fuse)	16A(Input Fuse)	25A(Input Fuse)	50A(Input Fuse)	100A(Input Fuse)
Protection		IP20				
EPO (Optional)		UPS shuts down				
Audio & Visual Alarms		Line failure, Battery low, Overload, System fault				
Communication Interface		USB(or RS232), SNMP adapter(optional), Relay board (optional)				
ENVIRONMENTAL						
Operation Temperature		0°C ~40°C				
Storage Temperature		-25°C ~55°C				
Humidity		20-90 RH @ 0- 40°C (non-condensing)				
Altitude		< 1500m				
Noise Level		< 50dBA 1 from meter			< 55dBA 1 from meter	
DIMENSION & WEIGHT						
DxWxH (mm)		293*144*209	399*144*209	399*144*209	355*191*330	415*191*330
Weight (kg)		4.2	6.3	6.5	10	12
STANDARDS						
Safety		IEC/EN62040-1,IEC/EN60950-1				IEC62040-1, GB4943
Electro Magnetic Compatibility		IEC/EN62040-2,IEC61000-4-2,IEC61000-4-3,IEC61000-4-4, IEC61000-4-5,IEC61000-4-6,IEC61000-4-8				IEC62040-2, IEC60664-1 1.2/50uS+8/20uS 6kV/3kA karşılınır